

**ST. THOMAS SCHOOL, SAHIBABAD**

**Class - V**

**Subject- Social Studies**

**Worksheet – 1 (2020-2021)**

**TOPIC – Globes**

**A . Fill in the blanks:**

- 1) Earth is \_\_\_\_\_ in shape.
- 2) End points at the top and bottom of the Earth's axis are known as \_\_\_\_\_ and \_\_\_\_\_.

**B. Define the following:**

- 1) Globe
- 2) Continents

**C. Write any two limitations of a globe.**

**D. What do you mean by axis ?**

**E. What are oceans ?**

**F. Draw a diagram of globe.**

**Note- The following pages contain the content to refer for this worksheet.**

# The Globe And Imaginary Lines

# 1

## Topics Covered

1. Globe, its uses and limitations
2. Latitudes
3. Longitudes

## Learning Objectives (You will learn about)

1. What is globe?
2. What are the uses of globe and its limitations?
3. What are latitudes and longitudes and their features?

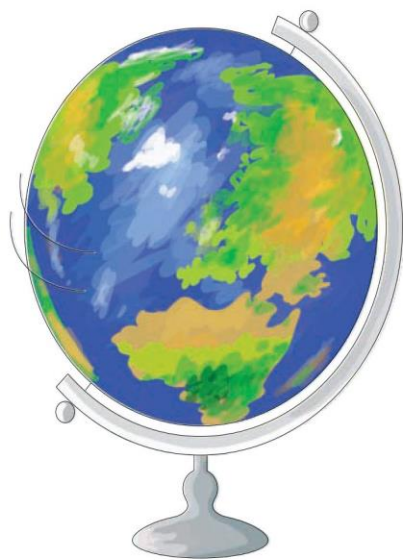
## Let's Start

Collect the information and pictures of the Earth taken from space using internet. Discuss your findings with the class.



The Earth has spherical shape

From the above activity you have come to know that the Earth is spherical in shape. Do you know that for a long time it was believed that the Earth was flat in shape? Because of its shape it is not possible to see entire earth even from space. If you take a closer look at pictures of the Earth, you will observe large land masses surrounded by water. These land masses are called **continents**. On the other hand, large water bodies surrounding them are called **oceans**. The two poles, north and south are the end points at the top and bottom of the Earth's axis respectively. The Earth rotates about an imaginary line which passes through its centre and is called its **axis**. In order to see the distribution of continents and oceans on the Earth, we take help of globes and maps. We will study about maps in the next chapter.



Globe

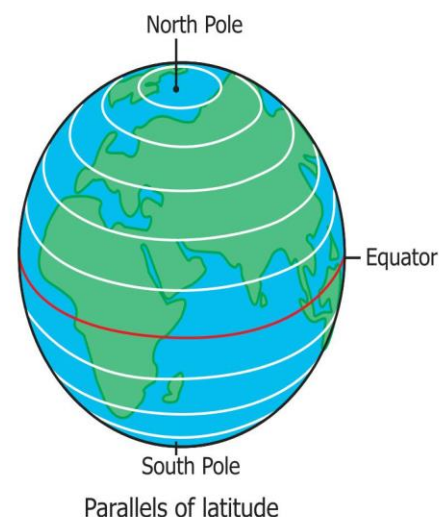
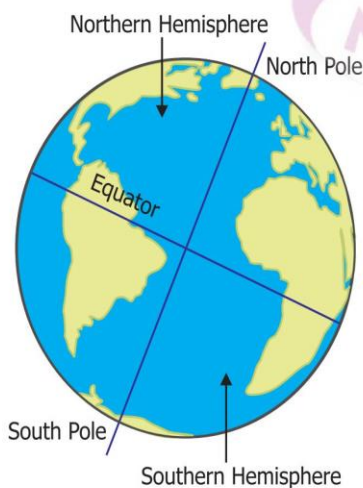
## GLOBE

A globe is a three dimensional miniature model of the Earth. It shows both distribution and location of land and water on the Earth's surface. A globe represents the Earth in a simple and accurate way. Although globes give us the accurate location and shape of the continents, oceans, etc., they have certain limitations.

- They do not allow us to see the entire Earth at a single glance.
- They do not show places and landforms in great detail.
- They are difficult to carry around.

## Did You Know?

- The Equator is the most important latitude. It is also called the Great Circle.
- Earth was given the title of "World's largest revolving or rotating globe" by Guinness Book of World Records in 1999. It took two years to build it. It represents the Earth seen from space.



## PARALLELS OF LATITUDE

On looking at the globe carefully, do you see a set of circular lines running across it? These are called **parallels** or **lines of latitude**. These are imaginary lines that run from east to west. The latitude, that divides the Earth into two equal halves is called the **Equator**. It is the longest parallel. The part of the Earth which lies to the north of the Equator is called the **Northern Hemisphere** and the one lying to the south is called the **Southern Hemisphere**. There are a total of 181 lines of latitude.

### Features of parallels of latitudes:

- The parallels of latitude are complete circles, except the North and the South poles, which are points.
- The lengths of the parallels decrease as you move away from the Equator towards the poles.

# St. Thomas School, Sahibabad

## Assignment: Art & Craft

### Class 5

Dear Students,

*Art and Craft worksheet is attached, please make sure that all the art work is done in your art file. . (DO IT ON THE ART PAPER OF THE OLD/ UNUSED ART FILE.)*

1. Make a scenery with collage work (Tearing and Pasting)
2. Draw and color a park seen (Use Oil Pastel)
3. Make five different leaf impressions\*  
(Use Poster Colors)

**NB: \*For leaf impression, collect leaves from the tree, color one side with the poster color.**

**ST. THOMAS SCHOOL, SAHIBABAD**

**Computer worksheet - 1(2020-21)**

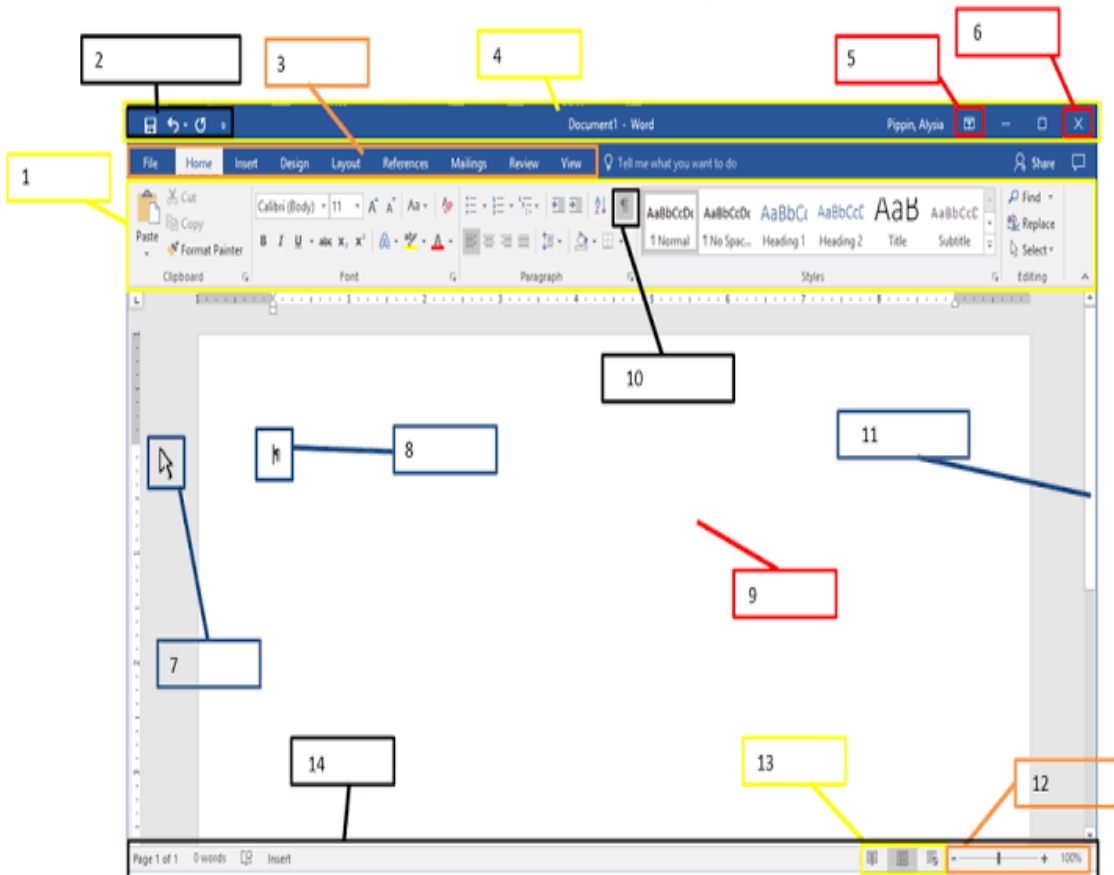
**Class -V**

**Microsoft word or MS- word** is a Graphical word processing program that users can type with. It is made by the computer company Microsoft. Its purpose is to allow users to type and save documents. MS-word is popular word processing program used primarily for creating documents such as letters, brochures, learning activities, tests, quizzes and student home assignments.

**Steps to create Microsoft word document**

\* [Click on start > choose all apps > click on word 2016](#)

Q.1) Microsoft word window is given below, label it. For labelling you can open word file in your computer or laptop and take help from there.



**St Thomas School  
Sahibabad**

**English Work Sheet -2**

**Class V**

**Note: All answers to be written in a separate copy.**

**Copy down the questions and write the answers.**

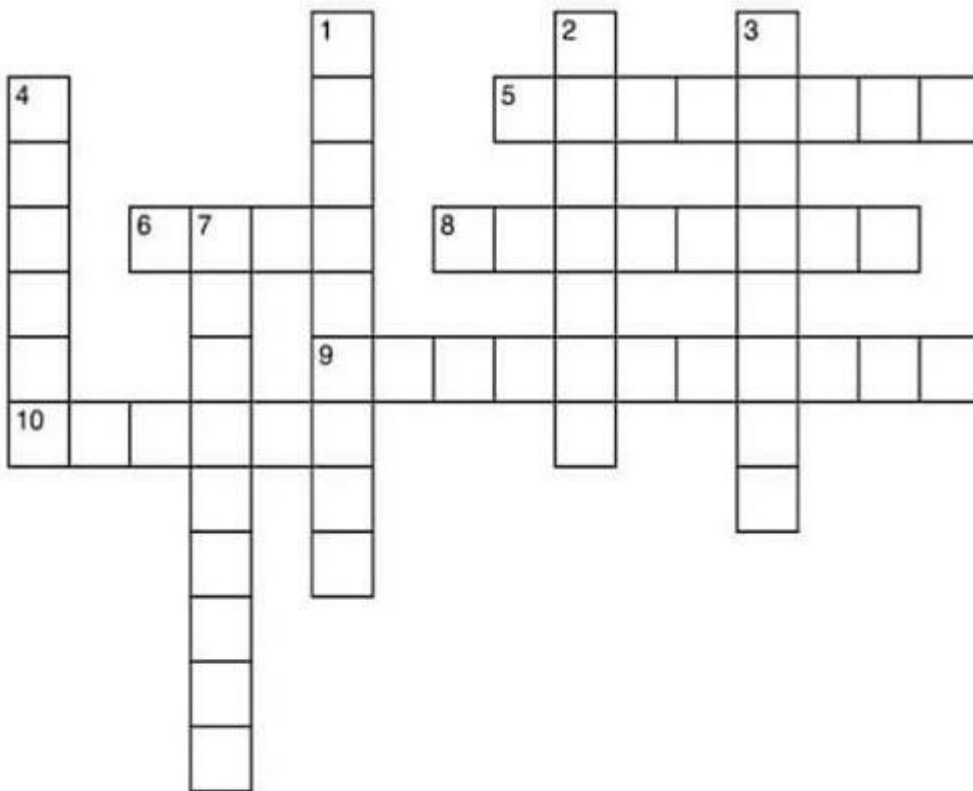
**I. For each word underlined, circle the synonyms.**

1. Wealth      love      sadness      green      riches
2. Big      zero      nothing      small      enormous
3. Small      little      soft      hard      tender
4. Thief      hate      robber      fire      key
5. Easy      simple      hard      great      help
6. Night      morning      daybreak      scare      sunset
7. Disgust      dislike      hate      little      wish
8. Water      learn      youth      careful      aqua
9. Music      flowers      happy      melody      yell
10. Coach      box      push      instruct      clean
11. Conclude      sweet      catch      force      finish
12. Preferred      hope      family      favourite      faith



II. Draw the crossword in your copy and fill it.

# VEGETABLES CROSSWORD



04-04-2020

सैंट थॉमस स्कूल

अभ्यास कार्य - 2

कक्षा – 5

विषय – हिंदी

प्रश्न १ उचित सर्वनामों से खाली जगह भरे।

१ ----- क्या कह सकता हूँ।

२ -----भी मेरी तरह शान से खड़े हुआ करो।

३ काश ----- मेरा कहा माना होता।

४ ----- कल मुम्बई जाना है।

५ माँ ----- बुला रही है।

६ ----- आज नई कमीज पहनी है।

७ ----- जल्दी घर जाना है।

प्रश्न २ निम्नलिखित वाक्यों में से सर्वनाम शब्द छांट कर लिखे।

१ मैं कल बाजार जाऊँगा -----

२ उसकी शाखायें चारों ओर थी-----

३ कमरे में कौन बैठा है -----

४ वह अपने आप चला जायगा -----

प्रश्न ३ नीचे लिखे शब्दों के विलोम शब्द लिखे।

१ बेसुरा -----

२ कृतिम -----



३ शत्रु -----

४ जीत -----

प्रश्न ४ निम्नलिखित शब्दों के लिंग बदलो ।

१ शेर -----

२ चोर -----

३ नौकर-----

४ ऊंट -----

प्रश्न ५ अपने पिता जी को रूपये मंगवाने के लिये एक पत्र लिखिए ।

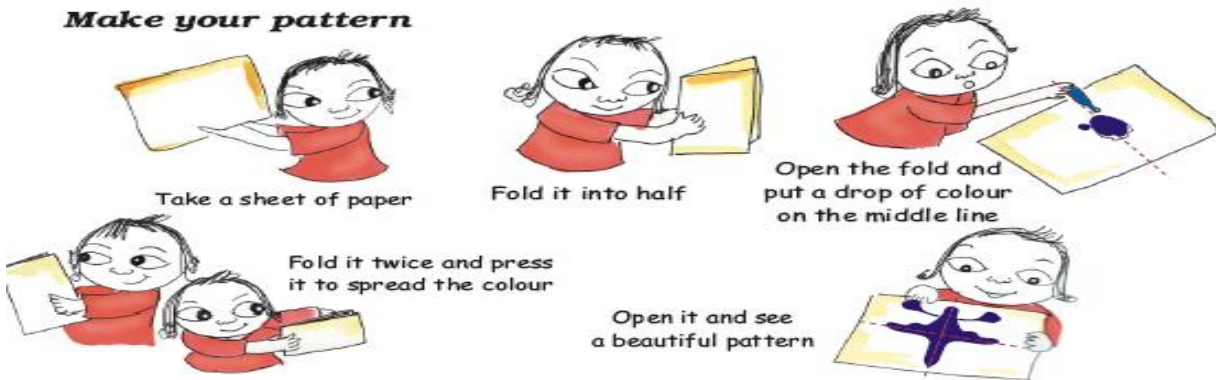
नोट: सभी छात्र अभ्यास कार्य अलग कॉपी पर दिनांक अनुसार करेंगे ।

Topic - Does it look like same ( introduction)

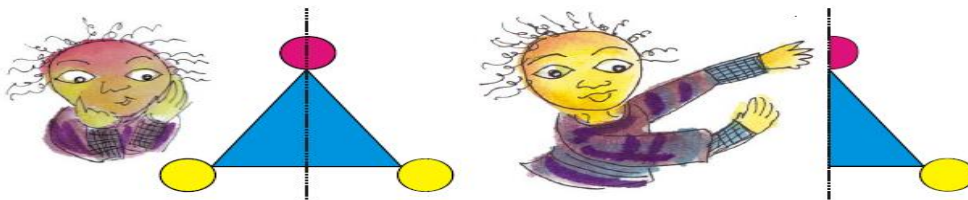
**Symmetry** - A meaning of symmetry defines that one shape is exactly like the other shape when it is moved, rotated or flipped.



**Make your pattern**



The dotted line divides the shapes into two halves. Dotted line is called **line of symmetry or axis of symmetry**.

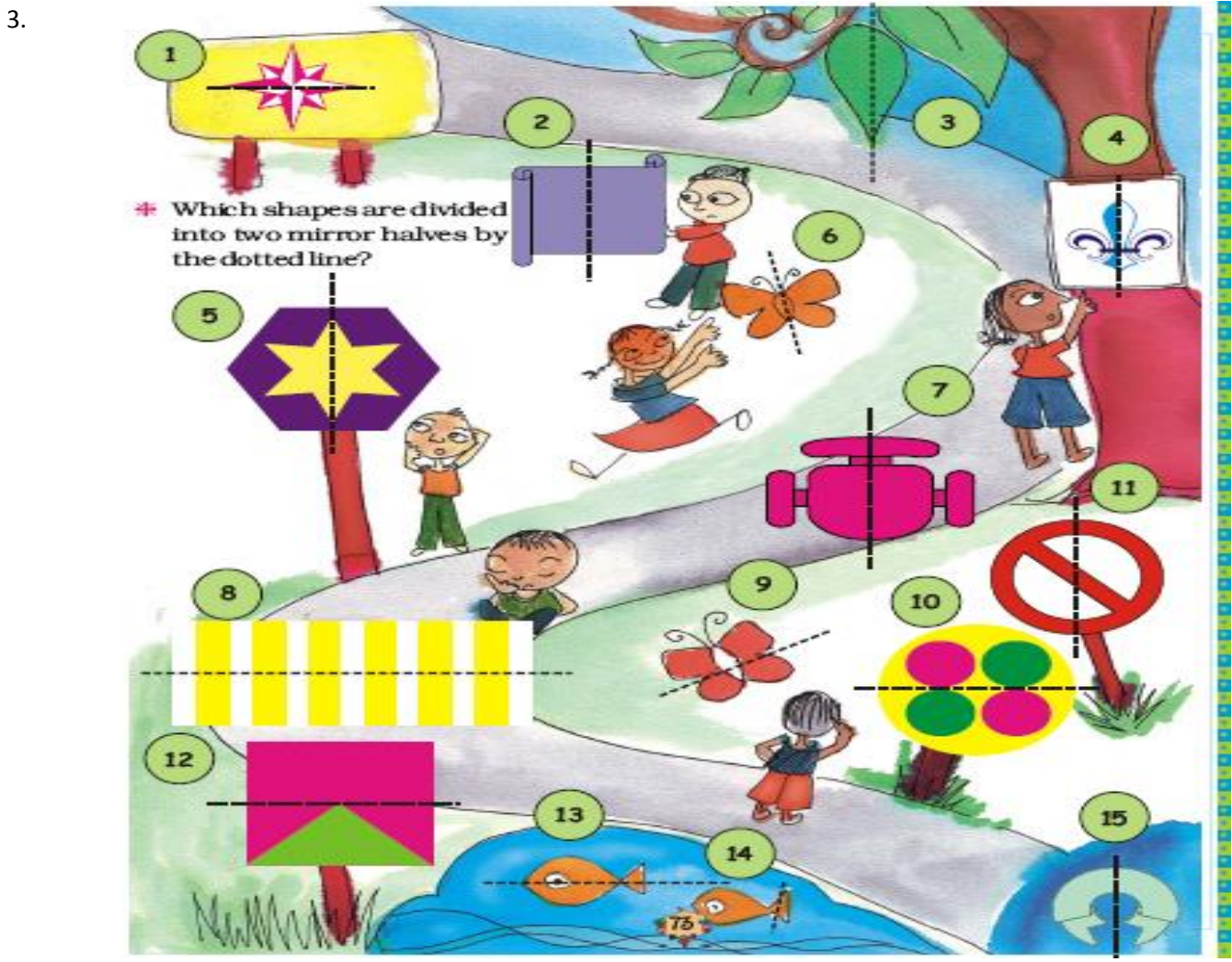


Now imagine the same for these pictures.



If you could it along the dotted line one half will cover the other similar half completely. So the two here are **mirror halves**.

1. Find out which letters in English alphabet look the same after half a turn.
2. Find out the one digit and two digits numbers which look the same after half a turn.



NOTE: Do the worksheet in separate notebook (it should be covered in purple and labelled neatly) or on A4 sheets.

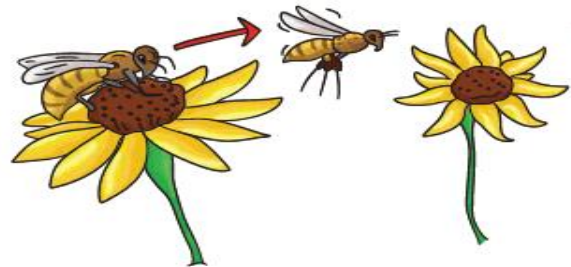
**Instruction:-** Read the notes carefully and answer the following questions:-

### Life of a Plant

We have learnt earlier that all living things have a limited life span. So, they produce their own kind to maintain existence. The process by which a living being produces a new individual of its own kind is called **reproduction**. Living things reproduce so that their species may not die out.

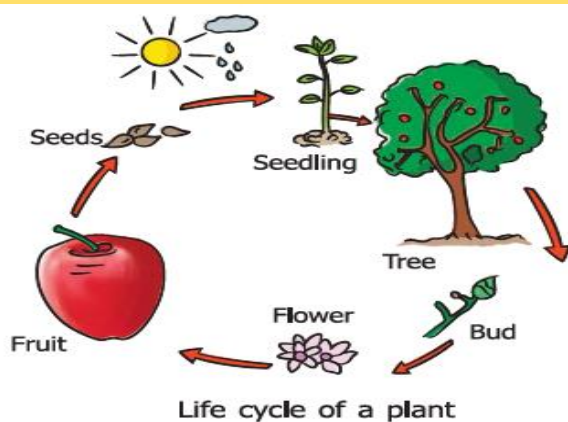
Every young sapling gradually grows into a mature plant. A plant is said to be matured, when it bears flowers. Flowers play the most important role in forming a new plant. Flowers produce fruits which contain seeds.

The beautiful colours and the fragrance of the flower attract the animals and insects to it. When these move from one flower to the other they transfer tiny particles called **pollens**. Pollens help in fruit formation. Fruits store food for the plant and bear seeds.



Insects help in transfer of pollens

Seeds contain the baby plant. When a seed germinates it grows out in the form of a young **sapling**. The process by which a seed produces a seedling or a baby plant is called **germination**. When the seed gets right amount of water, air and warmth, it produces a baby plant or seedling. As soon as the first leaves appear, the plant starts using the sunlight to grow.



A spore is a reproductive body that is produced by fungi and by some plant and micro organisms. It consists of a single cell able to produce a new individual.



Q1- Fill in the blanks:-

- (a) Flowers produce \_\_\_\_\_ which contain \_\_\_\_\_.
- (b) Plants require \_\_\_\_\_ to grow.
- (c) \_\_\_\_\_ help in fruit formation.
- (d) Plants mainly reproduce from \_\_\_\_\_.

Q2- Match the following:-

- |                     |   |
|---------------------|---|
| (a) Flower produces | (i) a baby plant                        |
| (b) Reproduction    | (ii) seeds                              |
| (c) Fruit contains  | (iii) Fruits                            |
| (d) Seedling        | (iv) giving individual of its own kind. |

Q3- Draw the labelled diagram of life cycle of a plant.

Q4- Define the following terms:-

- (a) Pollens.
- (b) Reproduction.
- (c) Germination

Q5- What are the necessary conditions for germination of seeds?

Q6- Write the role of flowers in plants.

Q7- Name the reproductive structure which is responsible for reproduction in fungi.

Q8- What do you mean by sapling?

Q9- Differentiate between reproduction and germination.

Q10- Write the function of fruits in plant.